

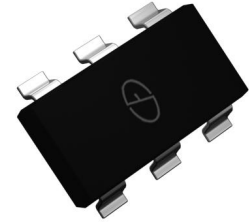
## 300mA,75V Switching Diode Array

### Features

- Fast Switching Speed
- For General Purpose Switching Applications
- Halogen-free、RoHS Compliant
- Ultra-Small Surface Mount Package



**RoHS**  
COMPLIANT



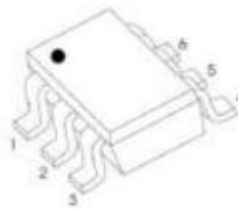
**Marking:** KJG

**SOT-363**

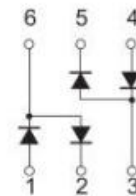
### Mechanical Data

- SOT-363 Package Type: SOT-363
- Epoxy UL: 94V-0
- Mounting Position: Any

**Pin definition**



**Equivalent circuit**



### Maximum Ratings & Electrical Characteristics (T<sub>A</sub>=25°C unless otherwise noted)

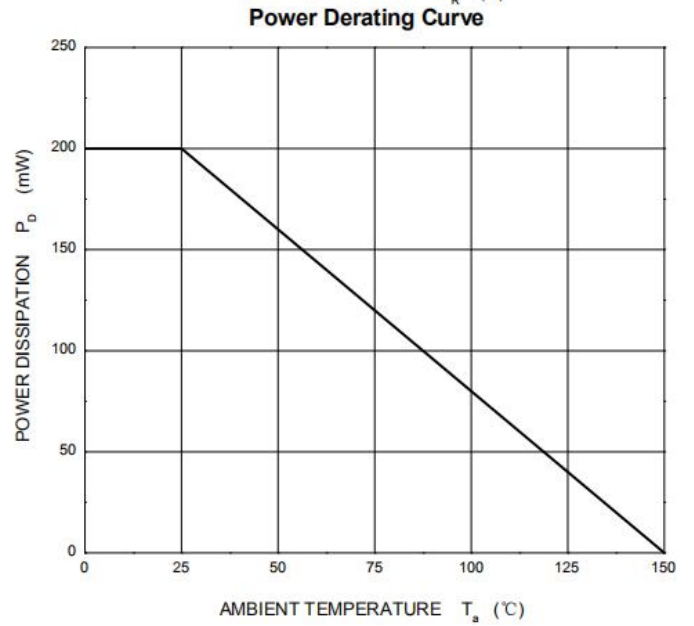
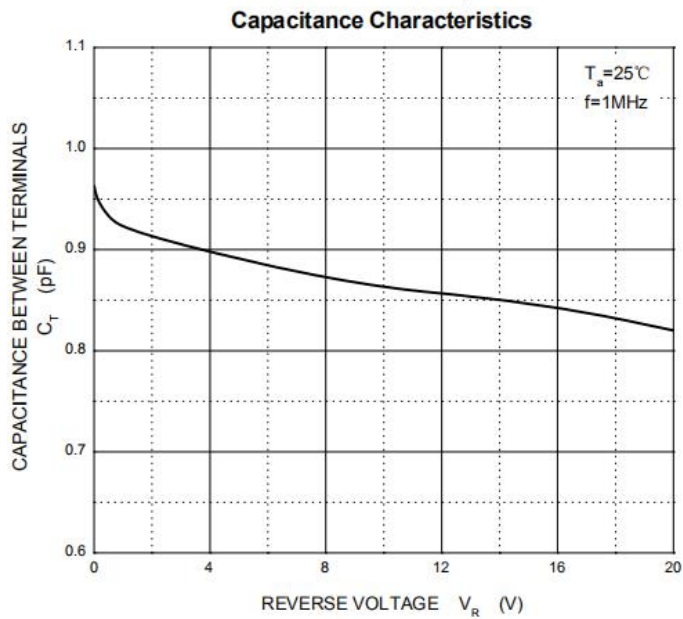
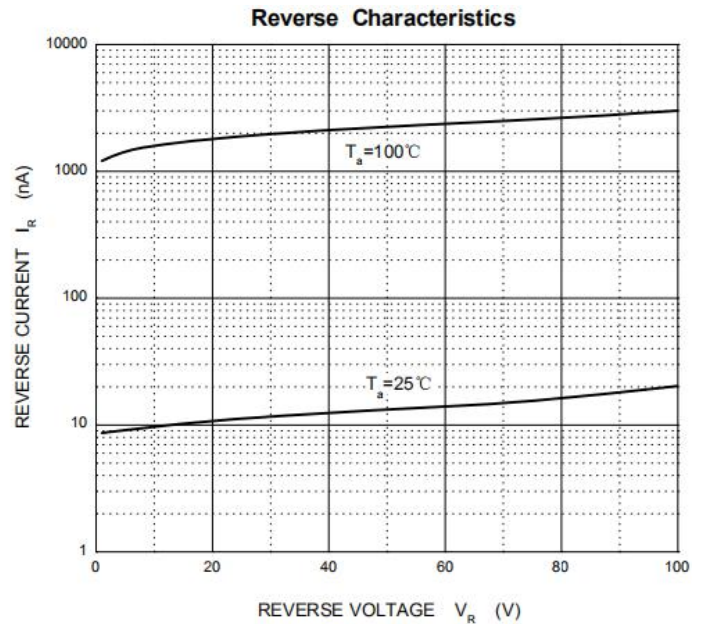
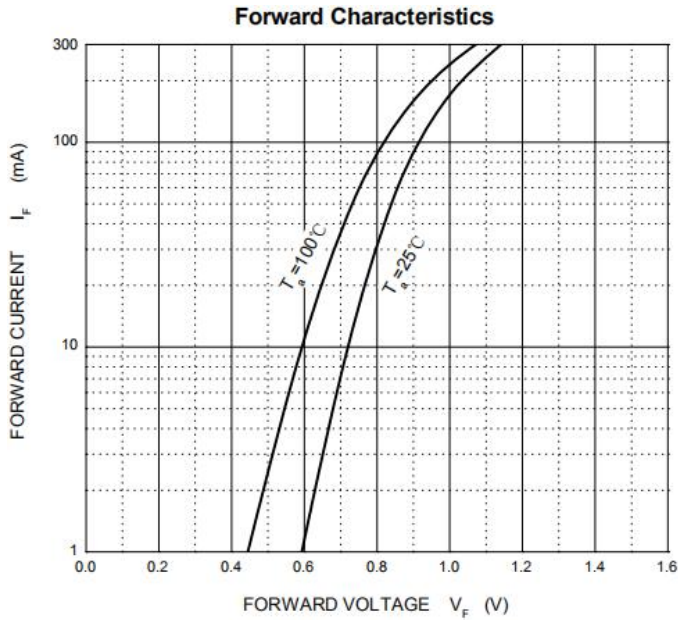
Parameter	Symbol	Value	Unit
DC Blocking Voltage	V <sub>R</sub>	75	V
Working Peak Reverse Voltage	V <sub>RWM</sub>		
Repetitive Peak Reverse Voltage	V <sub>RRM</sub>		
Non-repetitive peak forward current	I <sub>FM</sub>	300	mA
Power Dissipation	P <sub>D</sub>	200	mW
Average Rectified Current	I <sub>O</sub>	150	mA
Non-Repetitive Peak Forward Surge Current @ t=8.3ms	I <sub>FSM</sub>	2.0	A
Junction and Storage Temperature	T <sub>J</sub> T <sub>STG</sub>	-55 to+150	°C
Thermal Resistance from Junction to Ambient	R <sub>θJA</sub>	625	°C/W

### Electrical Specifications (T<sub>A</sub>=25°C unless otherwise noted)

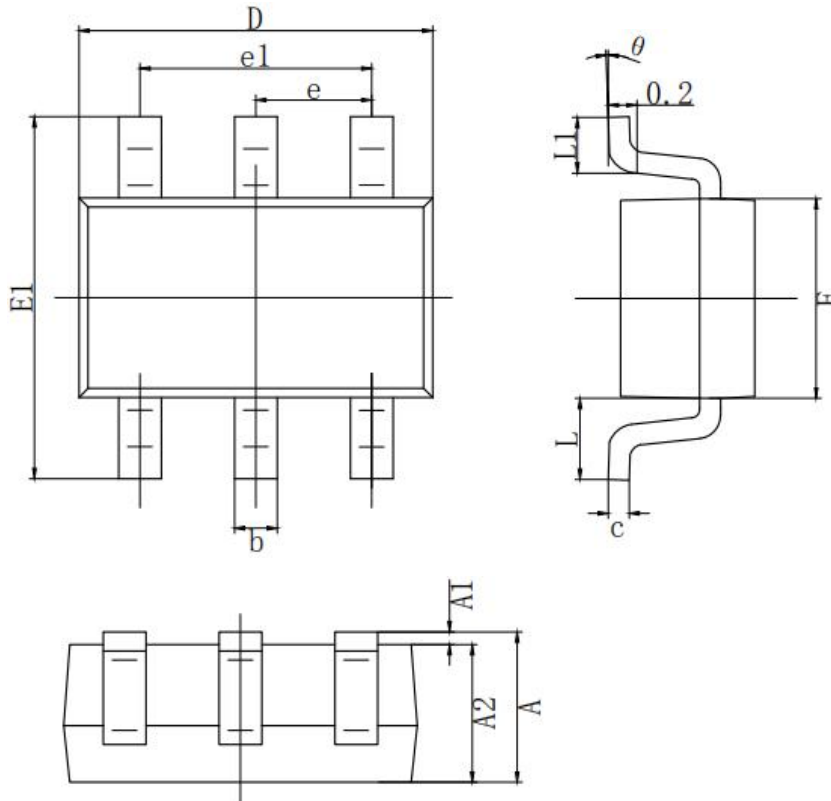
Parameter	Symbol	Test Conditions	Min	Typ	Max	Unit
Reverse Voltage	V <sub>R</sub>	I <sub>R</sub> =2.5μA	75			V
Forward Voltage	V <sub>F</sub>	I <sub>F</sub> =1mA			0.715	V
		I <sub>F</sub> =10mA			0.855	
		I <sub>F</sub> =50mA			1	
		I <sub>F</sub> =150mA			1.25	
Reverse Leakage Current	I <sub>R</sub>	V <sub>R</sub> =75V			2.5	μA
		V <sub>R</sub> =20V			25	nA
Typical junction capacitance	C <sub>J</sub>	V <sub>R</sub> =0V, f=1MHZ			2	pF
Reverse Recovery Time	T <sub>RR</sub>	I <sub>F</sub> = I <sub>R</sub> =10mA, I <sub>rr</sub> =0.1×I <sub>R</sub> , R <sub>L</sub> =100Ω			4	nS

## Ratings and Characteristics Curves

( $T_A = 25^\circ\text{C}$  unless otherwise noted)



**Package Outline Dimensions**  
millimeters



SYMBOL	MILLIMETER	
	MIN	MAX
A	0.900	1.100
A1	0.000	0.100
A2	0.900	1.000
b	0.150	0.350
c	0.080	0.150
D	2.000	2.200
E	1.150	1.350
E1	2.150	2.450
e	0.650 TYP.	
e1	1.200	1.400
L	0.525 REF.	
L1	0.260	0.460
θ	0°	8°

**Revision History**

Document Version	Date of release	Description of changes
Rev.A	2019.07.09	First issue

## Disclaimers

These materials are intended as a reference to assist our customers in the selection of the Suzhou Good-Ark product best suited to the customer's application; they do not convey any license under any intellectual property rights, or any other rights, belonging to Suzhou Good-Ark Electronics Co., Ltd. or a third party.

Suzhou Good-Ark Electronics Co., Ltd. assumes no responsibility for any damage, or infringement of any third-party's rights, originating in the use of any product data, diagrams, charts, programs, algorithms, or circuit application examples contained in these materials.

All information contained in these materials, including product data, diagrams, charts, programs and algorithms represents information on products at the time of publication of these materials, and are subject to change by Suzhou Good-Ark Electronics Co., Ltd. without notice due to product improvements or other reasons. It is therefore recommended that customers contact Suzhou Good-Ark Electronics Co., Ltd. or an authorized Suzhou Good-Ark Electronics Co., Ltd. for the latest product information before purchasing a product listed herein. The information described here may contain technical inaccuracies or typographical errors. Suzhou Good-Ark Electronics Co., Ltd. assumes no responsibility for any damage, liability, or other loss arising from these inaccuracies or errors. Please also pay attention to information published by Suzhou Good-Ark Electronics Co., Ltd. by various means, including our website home page.

(<http://www.goodark.com>)

When using any or all of the information contained in these materials, including product data, diagrams, charts, programs, and algorithms, Please be sure to evaluate all information as a total system before making a final decision on the applicability of the information and products. Suzhou Good-Ark Electronics Co., Ltd. assumes no responsibility for any damage, liability or other loss resulting from the information contained herein.

The prior written approval of Suzhou Good-Ark Electronics Co., Ltd. is necessary to reprint or reproduce in whole or in part these materials.

Please contact Suzhou Good-Ark Electronics Co., Ltd. or an authorized distributor for further details on these materials or the products contained herein.